

**BEP CO.**  
World of Colors

Take you to world of color ...

GENERAL CATALOGUE  
[www.bepcocolor.ir](http://www.bepcocolor.ir)

## About us :

BEPCO has been established in producing paints and adhesive, since 2009. BEPCO group organization is divided to decorative interior paints, high strength exterior paints, texture coatings and epoxy adhesive. This company possess high equipped laboratory besides experienced workers for research & development and quality control which is resulted in high qualified products.



<b>BEOPRIME</b>	Acrylic Primer	01
<b>BEPO PUTTY</b>	Acrylic Putty	02
<b>BEOPLAST</b>	PVA1 Paint	03
<b>BEOPLAST</b>	PVA1/2 Paint	04
<b>BEPOINT</b>	Interior Acrylic Paint	05
<b>BEPOLAQ</b>	Acrylic Lacquer Coating	06
<b>BEPOKEN</b>	Acrylic Knitex Coating	07
<b>BEPOEXT</b>	Exterior Acrylic Paint	08
<b>SILICON TOPCOAT</b>	Siliconized Acrylic Top Coat	09
<b>BEPOTEX</b>	Acrylic Texture Coating	10
<b>SANBEPOTEX</b>	Acrylic Sand Texture Coating	11
<b>BEPSULAD</b>	Elastometric Thermal Insulation Paint	12
<b>FIRE PROOF</b>	Fire Retardant Acrylic Coating	13

## PRODUCTS



**BEPOPRIME**



# BEPOPRIME

# BEOPRIME

## BEOPRIME

BEOPRIME is a low viscosity acrylic primer. BEOPRIME is applied as a first layer on porous substrates such as cement, concrete, limestone, bricks and so on, for saturation and better adhesion to next layers. The using of BEOPRIME results in better adhesion to substrates and reducing the consumption of main paint.

### Features:

- High adhesion to substrates (cement, concrete, limestone, bricks and so on)
- Easy to apply
- Fast drying
- Low V.O.C
- Low odor
- High penetration to porous substrates

### Keeping Condition:

- Keep far from direct sun light.
- Keep in temperature range of 5°C to 40°C
- Keeping period is between 12 month under standard condition

### Performance Condition:

- Don't paint above the humidity of 80%
- Don't paint below temperature of 5°C
- The temperature of substrates should be at least 3°C above dew-point.
- You can apply BEOPRIME by brush, roller and spray (Firstly, pollution, dirt, oil, grease and so on, should be omitted from substrates).

### Technical Data:

Technical Properties	
Type of Color	Primer
Density	0.85 ± 0.1(g/cm³)
Solvent	Don't Need
Surface Drying	30 to 45 Minutes
Bulk Drying	2 to 4 hours
PH	8-9
Keeping Rules	
Temperature	5 C° to 45 C°
Moisture	Below 80%
Don't Painting below 10 C°	
Keeping Period	
12 Months under Standard Conditions	







**BEPO PUTTY**



# BEPO PUTTY

# BEPO PUTTY

## BEPOPLAST:

BEPOPUTTY is a thixotropic knife grade putty based of water based styrene-acrylic resin. BEPOPUTTY is used for sealing, leveling of substrates and filling of cracks, voids and gaps. This product has good adhesion to very substrates, high sanding and good elasticity.

## Features:

- High adhesion to substrates Easy to apply
- Fast drying
- Low V.O.C
- Low odor
- Good sanding
- High filling
- Color-ability

## Keeping Condition:

- Keep far from direct sun light.
- Keep in temperature range of 5°C to 40°C
- Keeping period is between 12 month under standard condition

## Performance Condition:

- Don't perform above the humidity of 80%
- Don't perform below temperature of 5°C
- The temperature of substrates should be at least 3°C above dew-point.

## Technical Data:

Technical Properties	
Type of Color	Acrylic Putty
Glossiness	Matt
Density	1.7 ± 0.1(g/cm³)
Solvent	Clean water
Surface Drying	30 to 45 Minutes
Bulk Drying	2 to 4 hours
PH	8-9
Keeping Rules	
Temperature	5 C° to 45 C°
Moisture	Below 80%
Don't Painting below 10 C°	
Keeping Period	
12 Months under Standard Conditions	







**BEPOPLAST**





# BEPOPLAST

# BEPOPLAST

## BEPOPLAST:

**BEPOPLAST** is a water based paint based of copolymer of vinyl acetate. **BEPOPLAST** is usually used for interior coating which is known as a competitive price and fast drying coating. Due to good whiteness, reflecting and opacity is good option for interior walls and ceiling

## Features:

- High adhesion to substrates
- Fast drying
- Low V.O.C
- Good hiding power
- Good scrub resistance
- Competitive price
- Easy to apply

## Keeping Condition:

- Keep far from direct sun light.
- Keep in temperature range of 5°C to 40°C
- Keeping period is between 12 month under standard condition

## Performance Condition:

- Don't paint above the humidity of 80%
- Don't paint below temperature of 5°C
- The temperature of substrates should be at least 3°C above dew-point.
- You can apply BEPOPLAST by brush, roller and spray.

## Technical Data:

Type of Color	PVA Paint
Glossiness	Matt
Density	1.5 ± 0.1(g/m³)
Solvent	Clean Water
Surface Drying	1 to 2 hours
Bulk Drying	3 to 6 hours
PH	8-9
Hiding Power	4 to 4.5 m²/kg
Keeping Rules	
Temperature	5 C° to 35 C°
Moisture	Below 80%
Don't Painting below 10 C°	
Keeping Period	
12 Months under Standard Conditions	







**BEPOPLAST**





# BEPOPLAST

# BEPOPLAST

## BEPOPLAST:

**BEPOPLAST** is a water based paint based of copolymer of vinyl acetate. **BEPOPLAST** is usually used for interior coating which is known as a competitive price and fast drying coating. Due to good whiteness, reflecting and opacity is good option for interior walls and ceiling

## Features:

- High adhesion to substrates
- Fast drying
- Low V.O.C
- Good hiding power
- Good scrub resistance
- Competitive price
- Easy to apply

## Keeping Condition:

- Keep far from direct sun light.
- Keep in temperature range of 5°C to 40°C
- Keeping period is between 12 month under standard condition

## Performance Condition:

- Don't paint above the humidity of 80%
- Don't paint below temperature of 5°C
- The temperature of substrates should be at least 3°C above dew-point.
- You can apply BEPOPLAST by brush, roller and spray.

## Technical Data:

Type of Color	PVA Paint
Glossiness	Matt
Density	1.5 ± 0.1(g/m³)
Solvent	Clean Water
Surface Drying	1 to 2 hours
Bulk Drying	3 to 6 hours
PH	8-9
Hiding Power	4 to 4.5 m²/kg
Keeping Rules	
Temperature	5 C° to 35 C°
Moisture	Below 80%
Don't Painting below 10 C°	
Keeping Period	
12 Months under Standard Conditions	









**BEPOINT**

# BEPOINT

# BEPOINT

## BEPOINT:

**BEPOINT** is a water-based acrylic interior coating with very good adhesion and hiding power. This product is low V.O.C, easy to apply and fast drying coating which is presented in various colors and glossiness (Matt, semi-gloss and gloss). **BEPOINT** possess good flowing and brush-ability beside extraordinary wash-ability.

## Features:

- High adhesion to substrates
- Fast drying
- Low V.O.C
- Good hiding power
- Good scrub resistance
- Easy to apply
- Good wash-ability

## Keeping Condition:

- Keep far from direct sun light.
- Keep in temperature range of 5°C to 40°C
- Keeping period is between 12 month under standard condition

## Performance Condition:

- Don't paint above the humidity of 80%
- Don't paint below temperature of 5°C
- The temperature of substrates should be at least 3°C above dew-point.
- You can apply **BEPOINT** by brush, roller and spray.

## Technical Data:

Technical Properties	
Type of Color	Interior Acrylic Paint
Glossiness	Semi-Gloss/gloss
Density	1.3 – 1.7 (g/cm <sup>3</sup> ) (Relied on Glossiness)
Solvent	Clean Water
Surface Drying	1 to 2 hours
Bulk Drying	4 to 8 hours
PH	8-9
Hiding Power	5-6 m <sup>2</sup> /kg
Keeping Rules	
Temperature	5 C° to 34 C°
Moisture	Below 80%
Don't Painting below 10 C°	
Keeping Period	
12 Months under Standard Conditions	







**BEPOLAQ**





# BEPOLAQ



# BEPOLAQ

## BEPOLAQ

**BEPOLAQ** is a shiny transparent **acrylic coating** which can be used as the last layer of painting for higher resistance against weathering condition and durability. Moreover, **BEPOLAQ** can be used as a shiny transparent lacquer on stone or brick building facades, for resistance against water penetration and more durability. **Siliconized** super hydrophobic type of **BEPOLAQ** resists against the absorption of dust which make the building facades clean over the time.

### Features:

- High adhesion to substrates
- Low V.O.C
- High resistance against water penetration
- High resistance against water, rain and snow
- Makes more durability of facade
- Easy to apply
- Shiny and glossy finishes

### Keeping Condition:

- Keep far from direct sun light.
- Keep in temperature range of 5°C to 40°C
- Keeping period is between 12 month under standard condition

### Performance Condition:

- Don't paint above the humidity of 80%
- Don't paint below temperature of 5°C
- The temperature of substrates should be at least 3°C above dew-point.
- You can apply BEPOLAQ by brush, roller and spray.

### Technical Data:

Technical Properties	
Type of Color	Acrylic Lacquer
Glossiness	gloss
Density	1 ± 0.1(g/cm³)
Surface Drying	Up to 8 Hours
Bulk Drying	Up to 24 Hours
PH	8-9
Coverage	6-8 m²/lit
Keeping Rules	
Temperature	5 C° to 45 C°
Moisture	Below 80%
Don't Painting below 10 C°	
Keeping Period	
12 Months under Standard Conditions	









**BEPOKEN**





# BEPOKEN

# BEPOKEN

## BEPOPRIIME

**BEPOKEN** is a water-based acrylic Knitex which can be used for both interior and exterior. The usage of especial fiber in the formulation of **BEPOKEN** makes it more elastic. High elasticity of **BEPOKEN** resists against the cracking and weathering condition. The patterns of **BEPOKEN** cover the distortion and defects of substrates (especially the voids and cracking of concrete and cement). **BEPOKEN** can be applied on concrete, cement, bricks, limestone and so on. It is divided into 3 size of aggregates (coarse, medium and soft).

### Features:

- High adhesion to substrates
- Low V.O.C
- High resistance against water, rain and snow
- Good wash-ability
- High resistance against cracking
- No yellowing
- High resistance against UV
- Easy to apply

### Keeping Condition:

- Keep far from direct sun light.
- Keep in temperature range of 5°C to 40°C
- Keeping period is between 12 month under standard condition

### Performance Condition:

- Don't paint above the humidity of 80%
- Don't paint below temperature of 5°C
- The temperature of substrates should be at least 3°C above dew-point.
- You can apply BEPOKEN by spraying technique.

### Technical Data:

Technical Properties	
Type of Color	Acrylic Knitex
Glossiness	Matt
Density	1.5 ± 0.1 (g/cm³)
Solvent	Clean Water
Surface Drying	1 to 4 Hours
Bulk Drying	8 to 12 Hours
PH	8-9
Hiding Power	1-1.5 m²/kg
Keeping Rules	
Temperature	5 C° to 45 C°
Moisture	Below 80%
Don't Painting below 10 C°	
Keeping Period	
12 Months under Standard Conditions	









**BEPOEXT**

# BEPOEXT



# BEPOEXT

## BEPOEXT

BEPOEXT is a high quality exterior paint based on water-based acrylic resin. BEPOEXT has extraordinary resistance against weathering condition, water penetration, UV, yellowing and cracking. Various colors of BEPOEXT beside good physical and mechanical properties make it a good candidate for facades of building, hotels, hospitals, and so on. The siliconized type of BEPOEXT is ideal for heavy rainy states. BEPOEXT can be applied on concrete, cement, limestone, wood and bricks.

### Features:

- High adhesion to substrates
- Low V.O.C
- High resistance against water, rain and snow
- Good wash-ability
- High resistance against cracking
- No yellowing
- High resistance against UV
- Easy to apply
- Fast drying
- Various colors

### Keeping Condition:

- Keep far from direct sun light.
- Keep in temperature range of 5°C to 40°C
- Keeping period is between 12 month under standard condition

### Performance Condition:

- Don't paint above the humidity of 80%
- Don't paint below temperature of 5°C
- The temperature of substrates should be at least 3°C above dew-point.
- You can apply BEPOEXT by brushing, roller and spraying.

### Technical Data:

Technical Properties	
Type of Color	Exterior Acrylic Paint
Glossiness	Matt / Semi-Gloss
Density	1.5 ± 0.1(g/cm³)
Solvent	Clean Water
Surface Drying	1 to 4 Hours
Bulk Drying	8 to 12 Hours
PH	8-9
Hiding Power	5-6 m²/kg
Keeping Rules	
Temperature	5 C° to 45 C°
Moisture	Below 80%
Don't Painting below 10 C°	
Keeping Period	
12 Months under Standard Conditions	

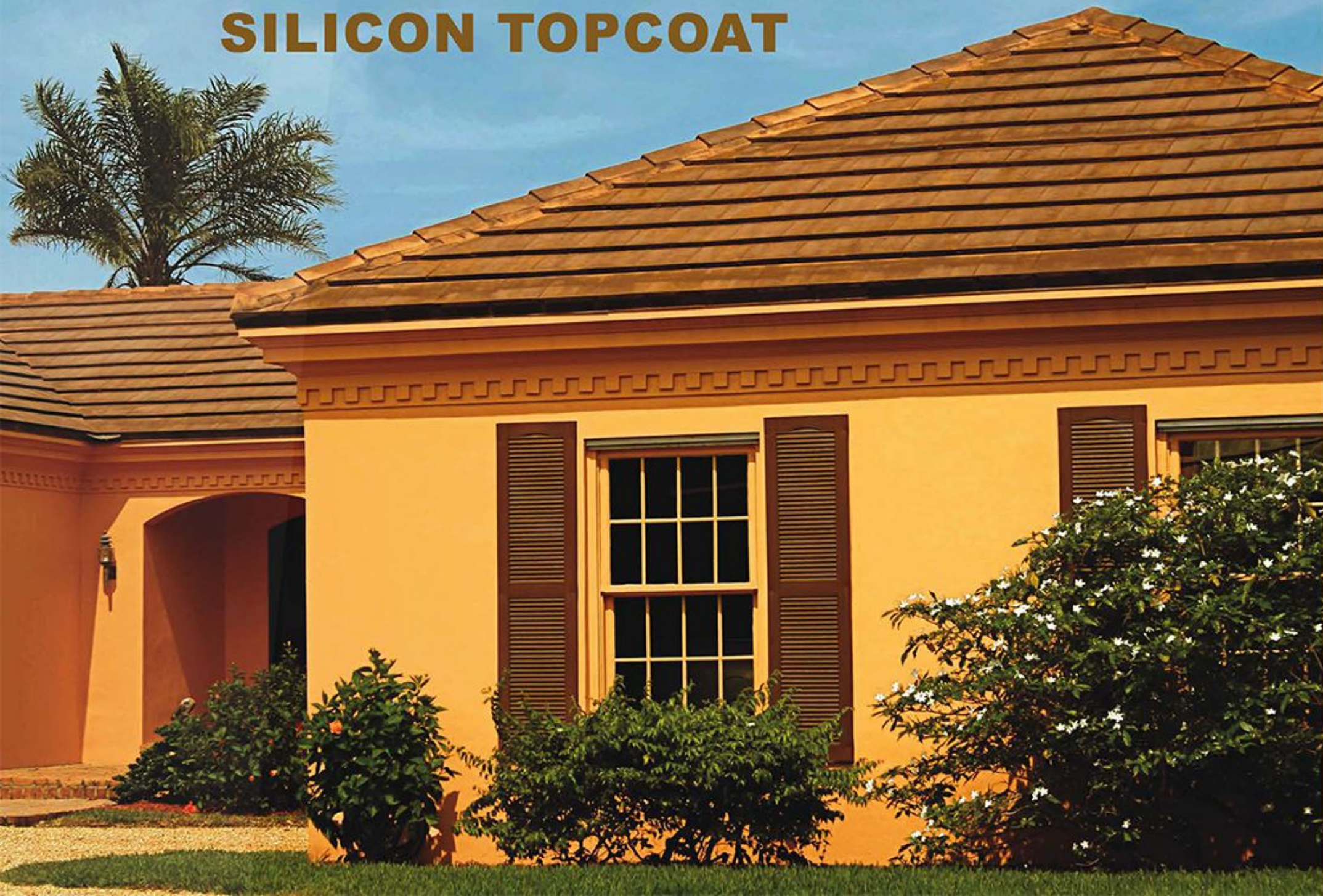








# SILICON TOPCOAT





# SILICON TOPCOAT

# SILICON TOPCOAT

## SILICON TOPCOAT

**Siliconized top-coat** is a high durable coating based on water-based **silicon** and acrylic resin which is applied as the last layer of painting. The using of **top-coat** has great effect on weathering resistance, durability and glossiness of the painting. The super hydrophobic properties of top-coat results in high resistance against heavy humidity, rain and snow.

### Features:

- High adhesion
- Low V.O.C
- High resistance against water, rain and snow
- Good wash-ability
- High resistance against cracking
- No yellowing
- High resistance against UV
- Easy to apply
- Fast drying

### Keeping Condition:

- Keep far from direct sun light.
- Keep in temperature range of 5°C to 40°C
- Keeping period is between 12 month under standard condition

### Performance Condition:

- Don't paint above the humidity of 80%
- Don't paint below temperature of 5°C
- The temperature of substrates should be at least 3°C above dew-point.
- You can apply Top-coat by brushing, roller and spraying.

### Technical Data:

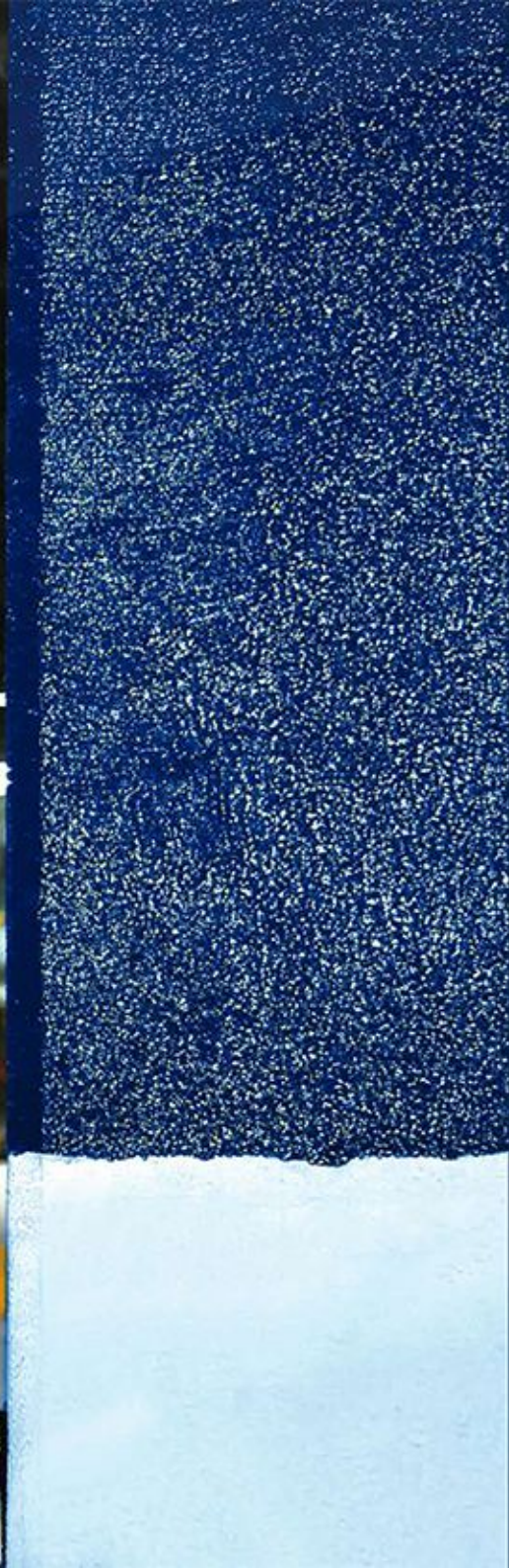
Technical Properties	
Type of Color	TOP-Coat
Opacity	Semi-Gloss/Gloss
Density	1.2 ± 0.1(g/cm³)
Solvent	Clean Water
Surface Drying	2 to 4 Hours
Bulk Drying	8 to 24 Hours
PH	8-9
Hiding Power	6-7 m²/kg
Keeping Rules	
Temperature	5 C° to 45 C°
Moisture	Below 80%
Don't Painting below 10 C°	
Keeping Period	
12 Months under Standard Conditions	











**BEPOTEX**



# BEPOTEX

# BEPOTEX

## BEPOTEX

**BEPOTEX** is a texture paint based on water-based acrylic resin. It can make different pattern and finishes due to high thixotropic properties. High thickness and pattern-ability of **BEPOTEX** can cover the defect and cracks of different substrates. The high elasticity and adhesion of **BEPOTEX** resists against cracking and delamination. Siliconized type of **BEPOTEX** is ideal for rainy and humid states. **BEPOTEX** can be applied on concrete, cement, limestone, wood and bricks. The other type of **BEPOTEX** is **SANBEPOTEX**. There are coarse mineral fillers in the formulation of **SANBEPOTEX** that cause to high mechanical properties and abrasion resistance.

### Features:

- High adhesion
- Low V.O.C
- High resistance against water, rain and snow
- High thixotropic properties
- Pattern-able finishes
- High scrub and abrasion resistance
- Fast drying
- No need to dilution

### Keeping Condition:

- Keep far from direct sun light.
- Keep in temperature range of 5°C to 40°C
- Keeping period is between 12 month under standard condition

### Performance Condition:

- Don't paint above the humidity of 80%
- Don't paint below temperature of 5°C
- The temperature of substrates should be at least 3°C above dew-point.
- You can apply **BEPOTEX** and **SANBEPOTEX** by spongy roller and pattern-able roller.

### Technical Data:

Technical Properties	
Type of Color	TOP-Coat
Opacity	Semi-Gloss/Gloss
Density	1.2 ± 0.1(g/cm³)
Solvent	Clean Water
Surface Drying	2 to 4 Hours
Bulk Drying	8 to 24 Hours
PH	8-9
Hiding Power	6-7 m²/kg
Keeping Rules	
Temperature	5 C° to 45 C°
Moisture	Below 80%
Don't Painting below 10 C°	
Keeping Period	
12 Months under Standard Conditions	







**SANBEPOTEX**





# SANBEPOTEX

# SANBEPOTEX

## SANBEPOTEX

**SANBEPOTEX** is another type of texture paint with higher mechanical properties. There are coarse mineral fillers in the formulation of **SANBEPOTEX** that cause to high mechanical properties and abrasion resistance. High thickness and pattern-ability of **SANBEPOTEX** can cover the defect and cracks of different substrates. The high elasticity and adhesion of **SANBEPOTEX** resists against cracking and delamination. Siliconized type of **SANBEPOTEX** is ideal for rainy and humid states.

### Features:

- High adhesion
- Low V.O.C
- High resistance against water, rain and snow
- High thixotropic properties
- Pattern-able finishes
- High scrub and abrasion resistance
- High resistance against cracking
- No yellowing
- High resistance against UV
- Easy to apply
- Fast drying
- No need to dilution

### Keeping Condition:

- Keep far from direct sun light.
- Keep in temperature range of 5°C to 40°C
- Keeping period is between 12 month under standard condition

### Performance Condition:

- Don't paint above the humidity of 80%
- Don't paint below temperature of 5°C
- The temperature of substrates should be at least 3°C above dew-point.
- You can apply SANBEPOTEX by spongy roller and pattern-able roller.

### Technical Data:

Technical Properties	
Type of Color	Sand Texture Acrylic Paint
Glossiness	Matt
Density	1.6 ± 0.1 (g/cm³)
Surface Drying	1 to 4 Hours
Bulk Drying	8 to 24 Hours
PH	8-9
Hiding Power	1.5 – 2 m²/kg
Keeping Rules	
Temperature	5 C° to 45 C°
Moisture	Below 80%
Don't Painting below 10 C°	
Keeping Period	
12 Months under Standard Conditions	











**BEPSULAD**



# **BEPSULAD**

# BEPSULAD

## BEPSULAD

**BEPSULAD** is an elastomeric thermal insulation paint based on water-based acrylic resin and ceramic nano powder. The using of **BEPSULAD** can be resulted in saving energy, up to 40%. The vacuum hallow sphere geometry of ceramic powder in **BEPSULAD** can reflect UV and thermal energy. The reflection of UV from the façade of building in the summer, results in cooler statue inside the room (When you applied **BEPSULAD** as exterior coating). Additionally, the reflectance of thermal energy in winter, results in warmer statue inside the room (When you applied **BEPSULAD** as interior coating).

### Features:

- High adhesion
- Low V.O.C
- Thermal insulation
- High elasticity
- No yellowing
- High resistance against UV
- Easy to apply
- Fast drying

### Keeping Condition:

- Keep far from direct sun light.
- Keep in temperature range of 5°C to 40°C
- Keeping period is between 12 month under standard condition

### Performance Condition:

- Don't paint above the humidity of 80%
- Don't paint below temperature of 5°C
- The temperature of substrates should be at least 3°C above dew-point.
- You can apply BEPSULAD by brushing, roller and spraying.

### Technical Data:

#### Technical Properties

Type of Color	Thermal Insulation Paint
Glossiness	Matt
Density	1.3 ± 0.1(g/cm³)
Solvent	Clean Water
Surface Drying	1 to 4 Hours
Bulk Drying	8 to 24 Hours
PH	8-9
Hiding Power	5-6 m²/kg

#### Keeping Rules

Temperature	5 C° to 45 C°
Moisture	Below 80%

Don't Painting below 10 C°

#### Keeping Period

12 Months under Standard Conditions









**FIRE PROOF**





# FIRE PROOF

# FIRE PROOF

## FIRE PROOF

**Fire proof** is a **fire resistance coating** formulated based on water-based acrylic resin, aluminum hydroxide and special mineral fillers. This paint should be applied about 700 to 1000 microns, on the substrate. The more thickness of this coating results in more resistance against fire expansion. **Fire Proof Coating of BEPCO** is totally halogen free. It is an ideal choice for schools, offices, hotels, hospitals, malls and so on. It can be applied on cement, concrete, metal structure, limestone and bricks.

### Features:

- High adhesion
- Low V.O.C
- Fire retardant
- High elasticity
- Fast drying
- High UV resistance

### Keeping Condition:

- Keep far from direct sun light.
- Keep in temperature range of 5°C to 40°C
- Keeping period is between 12 month under standard condition

### Performance Condition:

- Don't paint above the humidity of 80%
- Don't paint below temperature of 5°C
- The temperature of substrates should be at least 3°C above dew-point.
- You can apply Fire Proof Coating by brushing, roller and spraying.

### Technical Data:

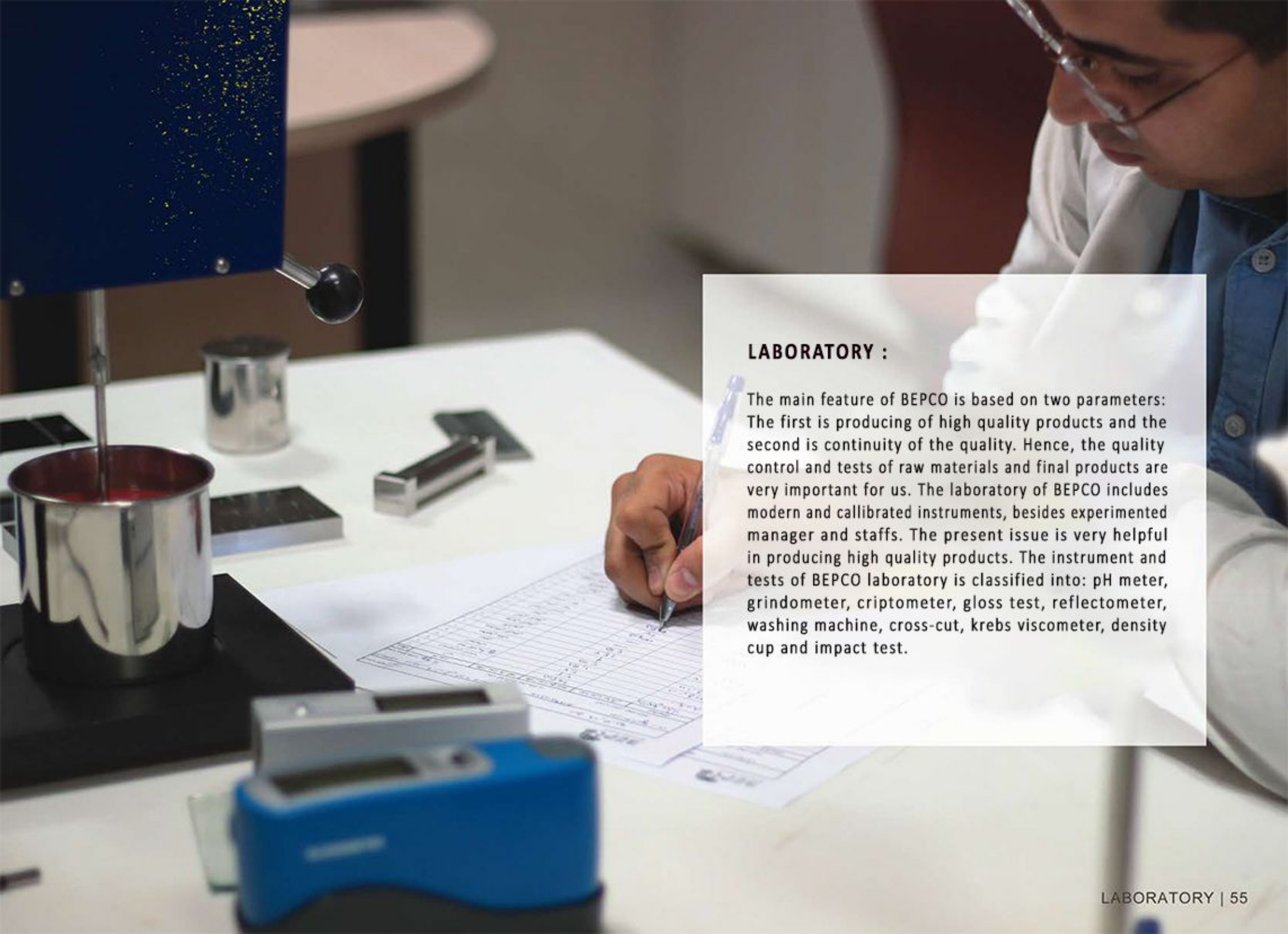
Technical Properties	
Type of Color	Fire Retardant Coating
Glossiness	Matt
Density	1.6 ± 0.1(g/cm³)
Surface Drying	1 to 3 Hours
Bulk Drying	8 to 24 Hours
PH	8-9
Thickness	700-1000 micron
Keeping Rules	
Temperature	5 C° to 45 C°
Moisture	Below 80%
Don't Painting below 10 C°	
Keeping Period	
12 Months under Standard Conditions	











### LABORATORY :

The main feature of BEPCO is based on two parameters: The first is producing of high quality products and the second is continuity of the quality. Hence, the quality control and tests of raw materials and final products are very important for us. The laboratory of BEPCO includes modern and calibrated instruments, besides experimented manager and staffs. The present issue is very helpful in producing high quality products. The instrument and tests of BEPCO laboratory is classified into: pH meter, grindometer, criptometer, gloss test, reflectometer, washing machine, cross-cut, krebs viscometer, density cup and impact test.